

No.	Description	Date

EXISTING TREE SCHEDULE									
Arborists NW Tree Inventory									
Tree Number	Common name	Scientific Name	# of Trunks	DBH (Inches)	Dripline (Feet)	Condition	Retain	Notes	
1	DOUGLAS FIR	Pseudotsuga menziesii	1	14	19	FAIR	YES		
2	DOUGLAS FIR	Pseudotsuga menziesii	1	15	12	FAIR	YES		
3	DOUGLAS FIR	Pseudotsuga menziesii	1	18	12	FAIR	YES		
4	DOUGLAS FIR	Pseudotsuga menziesii	1	25	19	FAIR	YES		
5	DOUGLAS FIR	Pseudotsuga menziesii	1	21	20	FAIR	YES		
6	CHERRY	Prunus avium	1	16	12	FAIR	YES		
7	DOUGLAS FIR	Pseudotsuga menziesii	1	15	14	FAIR	YES		
8	BIG LEAF MAPLE	Acer macrophyllum	1	14	18	FAIR	YES		
9	BIG LEAF MAPLE	Acer macrophyllum	1	12	14	FAIR	NO	STUMP SPROUTED	
10	BIG LEAF MAPLE	Acer macrophyllum	4	17.2	18	FAIR	NO	STUMP SPROUTED	
11	BIG LEAF MAPLE	Acer macrophyllum	1	12	12	FAIR	NO	STUMP SPROUTED	
12	BIG LEAF MAPLE	Acer macrophyllum	6	17.7	18	FAIR	NO	STUMP SPROUTED	
13	BIG LEAF MAPLE	Acer macrophyllum	3	13.8	14	FAIR	NO	STUMP SPROUTED	
14	BIG LEAF MAPLE	Acer macrophyllum	6	20.6	18	FAIR	NO	STUMP SPROUTED	
15	BIG LEAF MAPLE	Acer macrophyllum	1	18	27	FAIR	YES	STUMP SPROUTED	
16	BIG LEAF MAPLE	Acer macrophyllum	6	31	20	FAIR	NO	STUMP SPROUTED	
17	DOUGLAS FIR	Pseudotsuga menziesii	1	16	14	FAIR	YES		
18	BIG LEAF MAPLE	Acer macrophyllum	5	17.4	14	FAIR	NO	STUMP SPROUTED	
19	BIG LEAF MAPLE	Acer macrophyllum	1	10	18	FAIR	NO		
20	BIG LEAF MAPLE	Acer macrophyllum	3	13.6	18	FAIR	NO	STUMP SPROUTED	
21	DOUGLAS FIR	Pseudotsuga menziesii	1	18	14	FAIR	YES		
22	SCOUCLERS WILLOW	Salix scouleriana	4	28.7	16	FAIR	NO	CLINGING TO STEEP EDGE	
23	BIG LEAF MAPLE	Acer macrophyllum	1	10	12	FAIR	YES	STUMP SPROUTED - OFF SITE	
24	DOUGLAS FIR	Pseudotsuga menziesii	1	14	14	GOOD	YES	OFF SITE	
25	BIG LEAF MAPLE	Acer macrophyllum	1	6	10	FAIR	YES	OFF SITE	
26	BIG LEAF MAPLE	Acer macrophyllum	4	18.2	14	FAIR	NO	STUMP SPROUTED	
27	DOUGLAS FIR	Pseudotsuga menziesii	1	8.4	10	FAIR	YES	OFF SITE	
28	BIG LEAF MAPLE	Acer macrophyllum	1	6	10	FAIR	YES	OFF SITE	
29	DOUGLAS FIR	Pseudotsuga menziesii	1	12	12	FAIR	YES	OFF SITE	
30	DOUGLAS FIR	Pseudotsuga menziesii	1						
31	DOUGLAS FIR	Pseudotsuga menziesii	1	34	26	FAIR	YES	OFF SITE	
Total DBH				492.6					
Retained DBH				439.6					
Retained Percentage				89.2%					

REVISED 8/21/25

REVISED 8/21/25

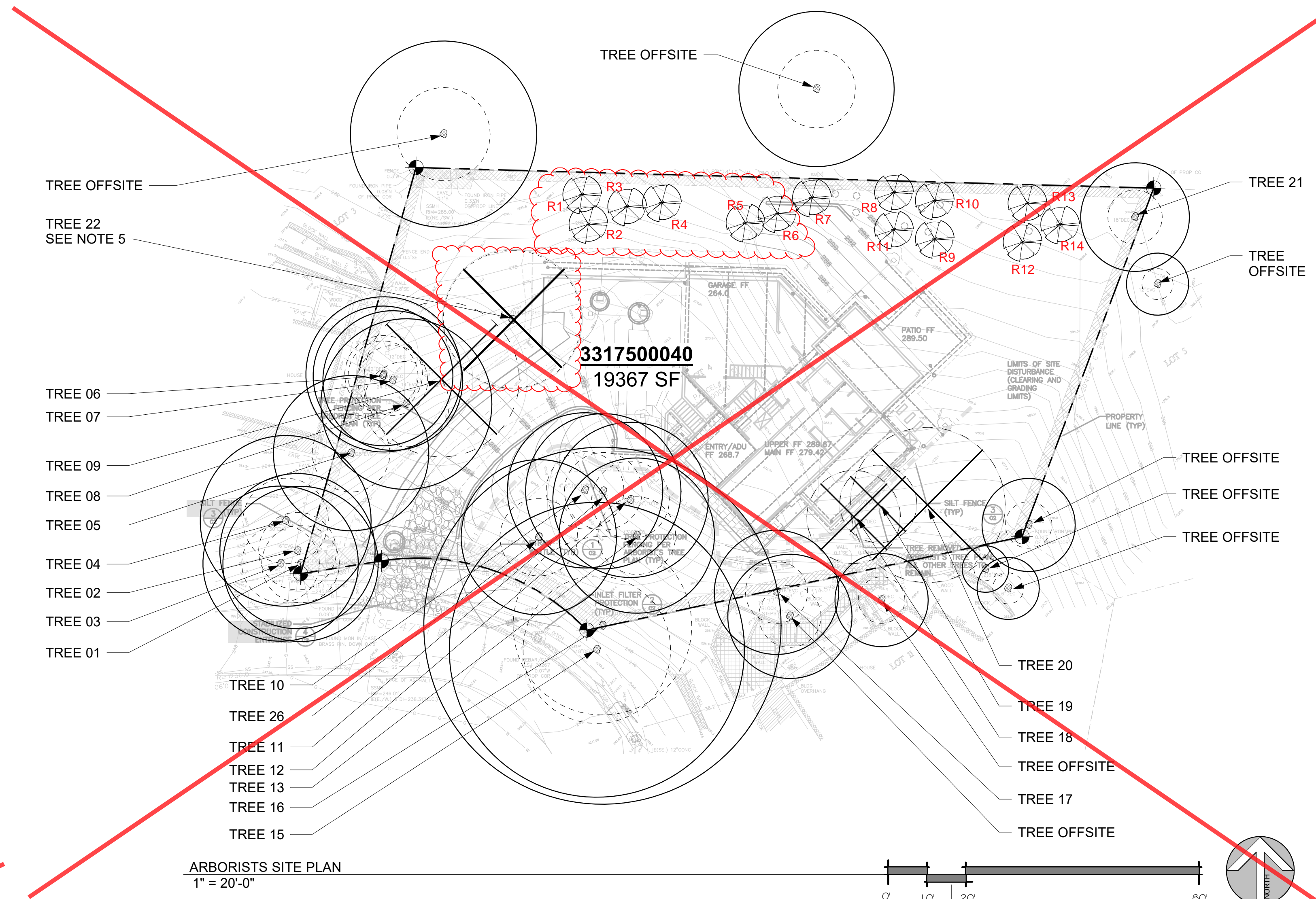
REVISED 8/21/25

REPLACEMENT TREE SCHEDULE				
TREE (R#)	COMMON NAME	LATIN NAME	SIZE	QTY
R1	EXCELSA CEDAR	Thuja Pllicata Excelsa	8'-10"	1
R2	EXCELSA CEDAR	Thuja Pllicata Excelsa	8'-10"	1
R3	EXCELSA CEDAR	Thuja Pllicata Excelsa	8'-10"	1
R4	EXCELSA CEDAR	Thuja Pllicata Excelsa	8'-10"	1
R5	EXCELSA CEDAR	Thuja Pllicata Excelsa	8'-10"	1
R6	EXCELSA CEDAR	Thuja Pllicata Excelsa	8'-10"	1
R7	EXCELSA CEDAR	Thuja Pllicata Excelsa	8'-10"	1
R8	EXCELSA CEDAR	Thuja Pllicata Excelsa	8'-10"	1
R9	EXCELSA CEDAR	Thuja Pllicata Excelsa	8'-10"	1
R10	EXCELSA CEDAR	Thuja Pllicata Excelsa	8'-10"	1
R11	EXCELSA CEDAR	Thuja Pllicata Excelsa	8'-10"	1
R12	EXCELSA CEDAR	Thuja Pllicata Excelsa	8'-10"	1
R13	EXCELSA CEDAR	Thuja Pllicata Excelsa	8'-10"	1
R14	EXCELSA CEDAR	Thuja Pllicata Excelsa	8'-10"	1

GENERAL ARBORISTS NOTES:

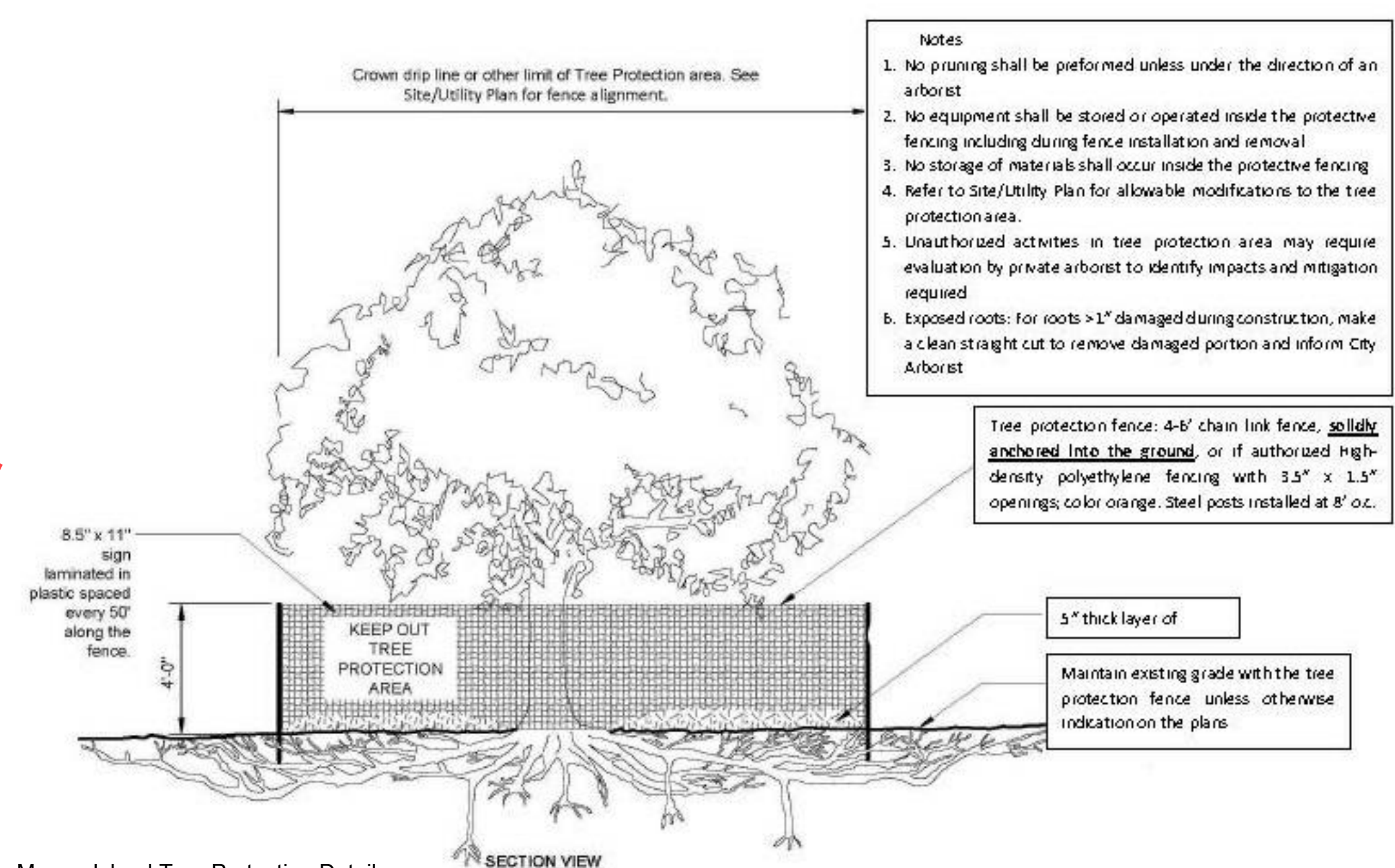
- PROJECT ARBORIST MUST BE ON-SITE DURING EXCAVATION ALONG THE DRIVEWAY. THE LAWN AND LANDSCAPE AREAS ARE REQUIRED TO PROVIDE POST-CONSTRUCTION SOIL QUALITY AND DEPTH IN ACCORDANCE WITH BMP 15.13. THE PROJECT ARBORIST MUST PROVIDE A LETTER OF CERTIFICATION TO ENSURE THAT THE LAWN AND LANDSCAPE AREAS ARE MEETING THE POST-CONSTRUCTION SOIL QUALITY AND DEPTH REQUIREMENTS ON THE APPROVED PLAN SET PRIOR TO FINAL INSPECTION OF THE PROJECT.
- PURSUANT TO MICC 19.10.070.D, TREES SHALL BE MAINTAINED IN A HEALTHY CONDITION FOR 5 YEARS. DEAD OR DEPRESSED TREES SHALL BE REPLACED.
- REFER TO C4 FOR THE POST-CONSTRUCTION SOIL QUALITY AND DEPTH PLAN.
- REFER TO ATTACHED ARCHITECT'S MEMO
- REFER TO C2 FOR LIMITS OF DISTURBANCE

SEE AR-3 FOR NEW REPLACEMENT TREE SCHEDULE



ARBORISTS SITE PLAN  
1" = 20'-0"

SEE AR-2 FOR TREE INVENTORY PLAN & AR-3 FOR TREE REPLACEMENT PLAN



Mercer Island Tree Protection Detail  
1/4" = 1'-0"

	TREE DRIP LINE (DL)
	DIAMETER STANDARD HEIGHT (DSH)
	EVERGREEN TREE
	DECIDUOUS TREE
	TREE TO BE REMOVED
	NEW TREE (R#)

SEE AR-2 AND AR-3 FOR LEGEND

Revised by: Ectypos Architects 8/21/25

Revised by: Ectypos Architects 2/6/23

PREPARED BY:

NEAL BAKER  
 ARBORISTS NW.COM  
 ISA CERT. PN1075A  
 TRAQ ISA (TREE RISK ASSESSMENT QUALIFIED)  
 MEMBER AREA & SOCA  
 PH: 206 779 2579

STEINBORN AR-1

8435 SE 47TH PL, MERCER ISLAND, WA 98040

STEINBORN AR-1

ARBORIST TREE PLAN

Project number	21029
Date	--
Drawn by	CW
Checked by	NB

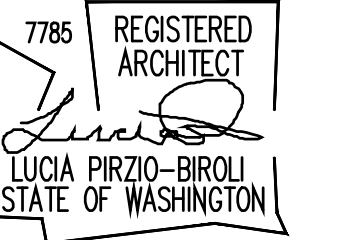
AR-1

Scale As indicated



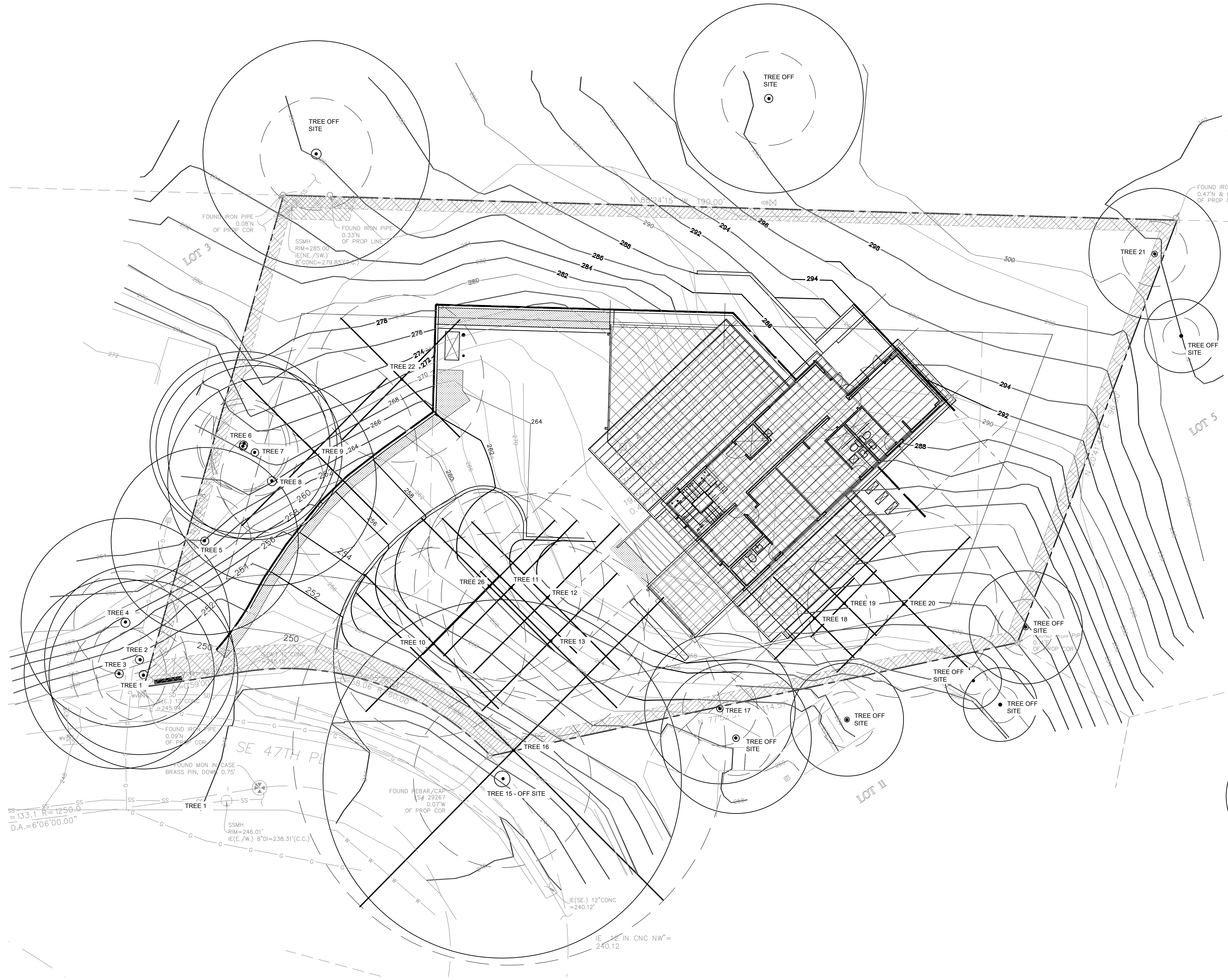
**ECTYPOS**  
ARCHITECTURE

4212 W. Mercer Way  
Mercer Island, WA 98040  
t. (206) 232-9147  
f. (206) 275-0312

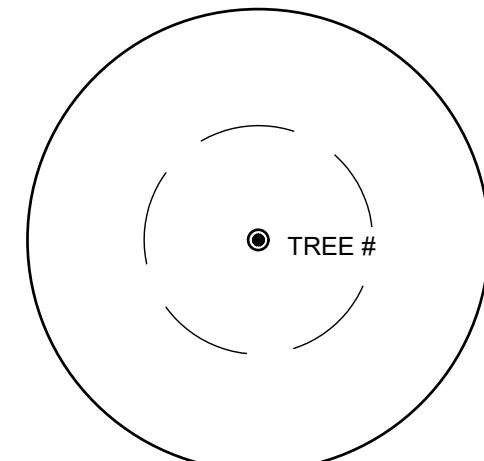


# CHEN RESIDENCE

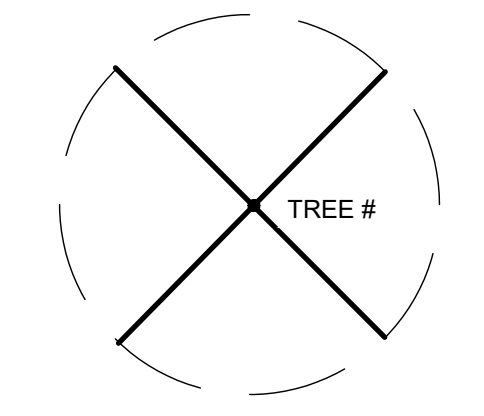
New Residence  
8435 SE 47th PL.  
Mercer Island, WA 98040



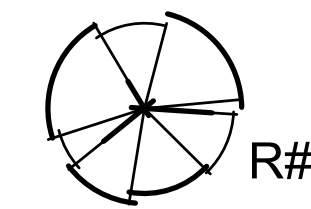
### Tree Legend



EXISTING TREE



EXISTING TREE REMOVED



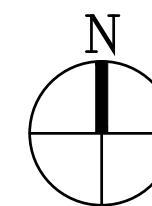
REPLACEMENT TREE

Date:  
**2/19/2023 Permit Approval**  
**8/24/2023 Permit Rev. Sub**  
**12/6/2024 Permit Rev. Sub**  
**8/20/2025 Revised Tree**

Scale:

Sheet:  
**Tree Inventory Plan**

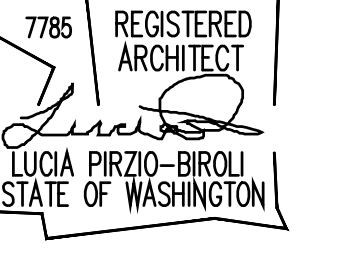
**AR-2**



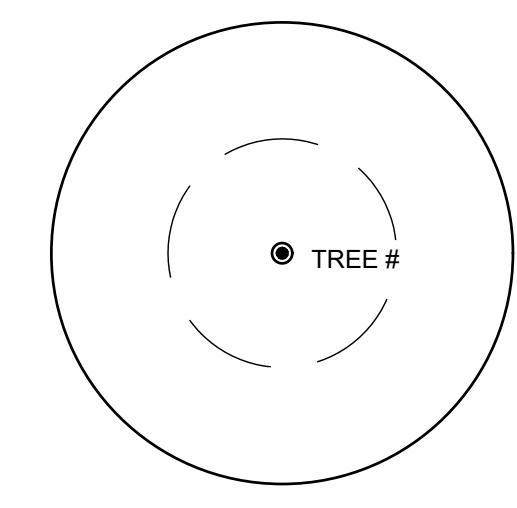
1

**Tree Inventory Plan**

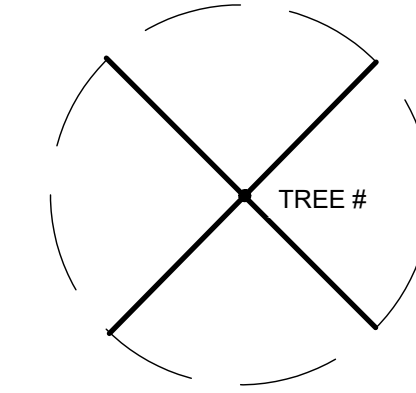
Scale: 1"=10'



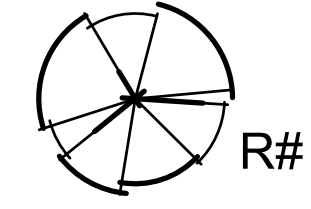
**Tree Legend**



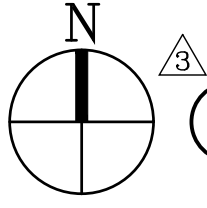
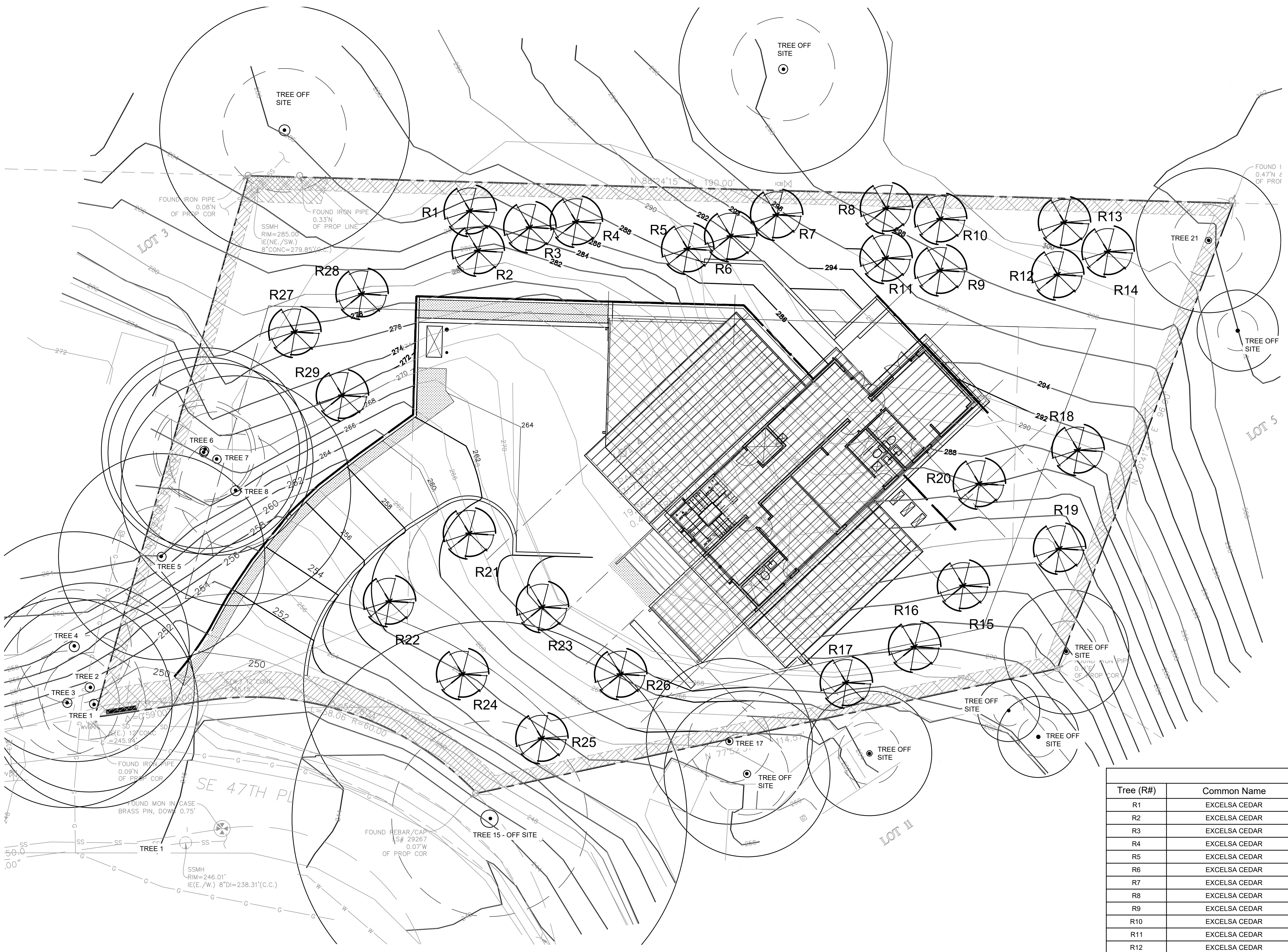
EXISTING TREE



EXISTING TREE REMOVED



REPLACEMENT TREE



**1 Replacement Tree Plan**

**Replacement Tree Plan Notes**

1. INSTALL AND MAINTAIN TREES PER BMP BY SPECIES FOR WESTERN WASHINGTON.
2. THE LAWN AND LANDSCAPE AREAS ARE REQUIRED TO PROVIDE POST-CONSTRUCTION SOIL QUALITY AND DEPTH IN ACCORDANCE WITH BMP T5.13. THE PROJECT ARBORIST MUST PROVIDE A LETTER OF CERTIFICATION TO ENSURE THAT THE LAWN AND LANDSCAPE AREAS ARE MEETING THE POST-CONSTRUCTION SOIL QUALITY AND DEPTH REQUIREMENTS ON THE APPROVED PLAN SET PRIOR TO FINAL INSPECTION OF THE PROJECT.
3. PURSUANT TO MICC 19.10.070.D TREES SHALL BE MAINTAINED IN A HEALTHY CONDITION FOR 5 YEARS. DEAD OR DEPRESSED TREES SHALL BE REPLACED.
4. REFER TO C4 FOR THE POST-CONSTRUCTION SOIL QUALITY AND DEPTH PLAN

**3 Replacement Tree Schedule**

Tree (R#)	Common Name	Latin Name	Size	Notes <sup>1</sup>
R1	EXCELSA CEDAR	THUJA PLICATA EXCELSA	8'-10" HEIGHT	SOAKER HOSE UNTIL ESTABLISHED
R2	EXCELSA CEDAR	THUJA PLICATA EXCELSA	8'-10" HEIGHT	SOAKER HOSE UNTIL ESTABLISHED
R3	EXCELSA CEDAR	THUJA PLICATA EXCELSA	8'-10" HEIGHT	SOAKER HOSE UNTIL ESTABLISHED
R4	EXCELSA CEDAR	THUJA PLICATA EXCELSA	8'-10" HEIGHT	SOAKER HOSE UNTIL ESTABLISHED
R5	EXCELSA CEDAR	THUJA PLICATA EXCELSA	8'-10" HEIGHT	SOAKER HOSE UNTIL ESTABLISHED
R6	EXCELSA CEDAR	THUJA PLICATA EXCELSA	8'-10" HEIGHT	SOAKER HOSE UNTIL ESTABLISHED
R7	EXCELSA CEDAR	THUJA PLICATA EXCELSA	8'-10" HEIGHT	SOAKER HOSE UNTIL ESTABLISHED
R8	EXCELSA CEDAR	THUJA PLICATA EXCELSA	8'-10" HEIGHT	SOAKER HOSE UNTIL ESTABLISHED
R9	EXCELSA CEDAR	THUJA PLICATA EXCELSA	8'-10" HEIGHT	SOAKER HOSE UNTIL ESTABLISHED
R10	EXCELSA CEDAR	THUJA PLICATA EXCELSA	8'-10" HEIGHT	SOAKER HOSE UNTIL ESTABLISHED
R11	EXCELSA CEDAR	THUJA PLICATA EXCELSA	8'-10" HEIGHT	SOAKER HOSE UNTIL ESTABLISHED
R12	EXCELSA CEDAR	THUJA PLICATA EXCELSA	8'-10" HEIGHT	SOAKER HOSE UNTIL ESTABLISHED
R13	EXCELSA CEDAR	THUJA PLICATA EXCELSA	8'-10" HEIGHT	SOAKER HOSE UNTIL ESTABLISHED
R14	EXCELSA CEDAR	THUJA PLICATA EXCELSA	8'-10" HEIGHT	SOAKER HOSE UNTIL ESTABLISHED
R15	WESTERN REDBUD	CERCIS OCCIDENTALIS	1.5" CALIPER	WELL DRAINED SOIL/WEEKLY WATER
R16	WESTERN REDBUD	CERCIS OCCIDENTALIS	1.5" CALIPER	WELL DRAINED SOIL/WEEKLY WATER
R17	WESTERN REDBUD	CERCIS OCCIDENTALIS	1.5" CALIPER	WELL DRAINED SOIL/WEEKLY WATER
R18	STRAWBERRY TREE	ARBUTUS UNEDO	1.5" CALIPER	WELL DRAINED SOIL
R19	STRAWBERRY TREE	ARBUTUS UNEDO	1.5" CALIPER	WELL DRAINED SOIL
R20	STRAWBERRY TREE	ARBUTUS UNEDO	1.5" CALIPER	WELL DRAINED SOIL
R21	AKEBONO CHERRY	PRUNUS YEDOENSIS	2.5" CALIPER	WELL DRAINED FERTILE SOIL
R22	AKEBONO CHERRY	PRUNUS YEDOENSIS	2.5" CALIPER	WELL DRAINED FERTILE SOIL
R23	AKEBONO CHERRY	PRUNUS YEDOENSIS	2.5" CALIPER	WELL DRAINED FERTILE SOIL
R24	AKEBONO CHERRY	PRUNUS YEDOENSIS	2.5" CALIPER	WELL DRAINED FERTILE SOIL
R25	AKEBONO CHERRY	PRUNUS YEDOENSIS	2.5" CALIPER	WELL DRAINED FERTILE SOIL
R26	AKEBONO CHERRY	PRUNUS YEDOENSIS	2.5" CALIPER	WELL DRAINED FERTILE SOIL
R27	WESTERN REDBUD	CERCIS OCCIDENTALIS	1.5" CALIPER	WELL DRAINED SOIL/WEEKLY WATER
R28	WESTERN REDBUD	CERCIS OCCIDENTALIS	1.5" CALIPER	WELL DRAINED SOIL/WEEKLY WATER
R29	WESTERN REDBUD	CERCIS OCCIDENTALIS	1.5" CALIPER	WELL DRAINED SOIL/WEEKLY WATER

Date:  
**2/19/2023 Permit Approval**  
**8/24/2023 Permit Rev. Sub**  
**12/6/2024 Permit Rev. Sub**  
**8/20/2025 Revised Tree**

Scale:

Sheet:  
**Replacement Tree Plan**